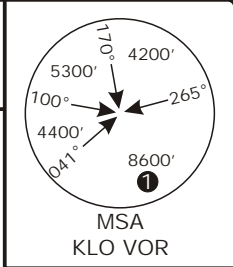


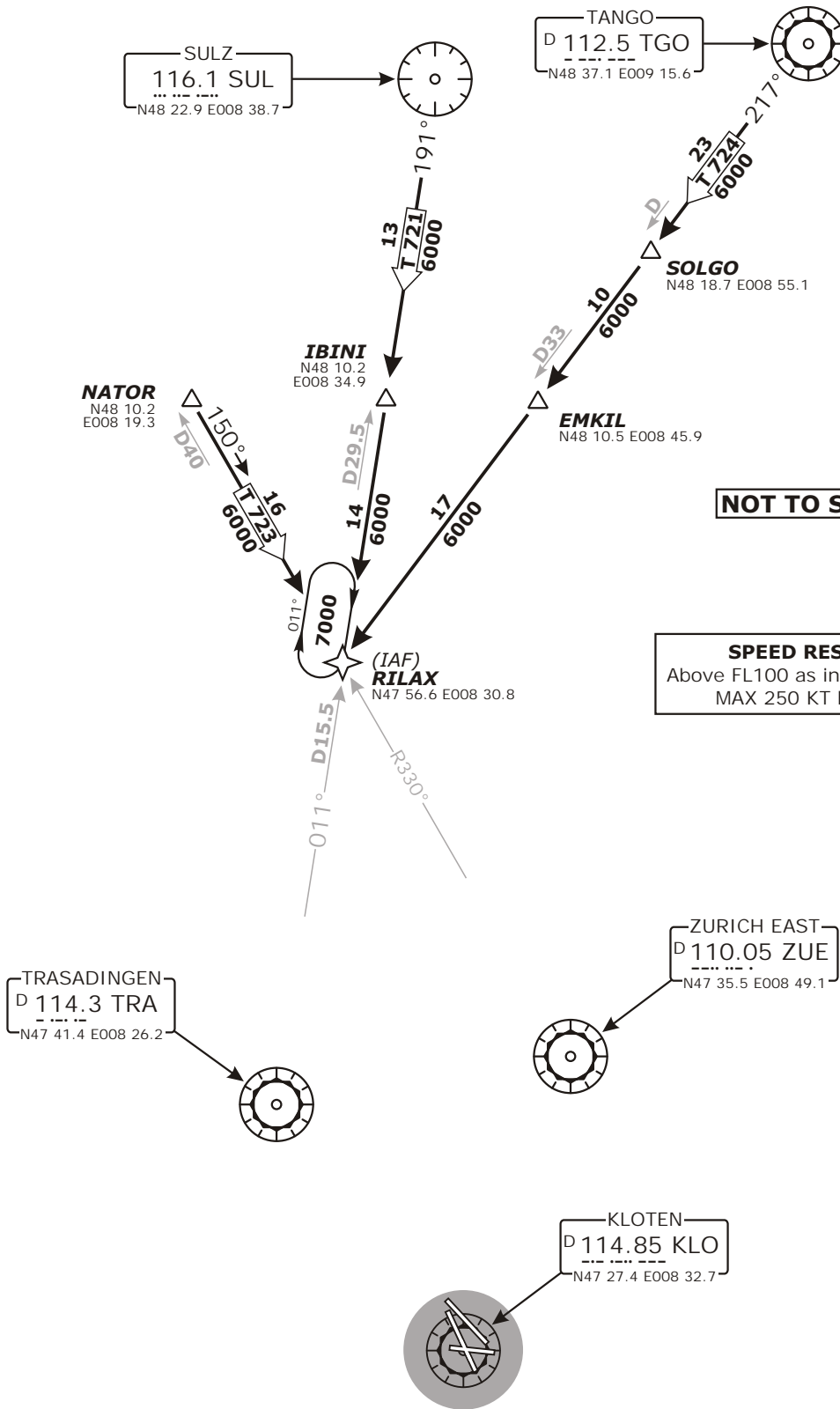
Valid for flight simulation use only - do not use for real life navigation

| | | | | |
|-----------------------------------|--------------------------------------|--------------------------------------|--------------------------|---|
| Swiss Radar LSAS_CTR 128.05 | ZURICH Arrival LSZH_APP 120.75 | ZURICH Final LSZH_F_APP 125.35 | Apt Elev 1416' | Alt Set: hPa (IN on request) Trans level: by ATC Trans alt: 7000' |
|-----------------------------------|--------------------------------------|--------------------------------------|--------------------------|---|



RNAV TRANSITIONS

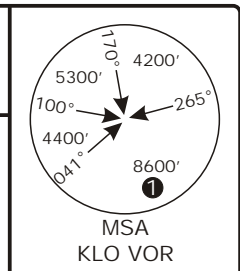
TO RILAX HOLDING
FOR CONTINUATION AFTER RILAX REFER TO CHART NO.3



CHANGES: Transition to TRA transferred.

Valid for flight simulation use only - do not use for real life navigation

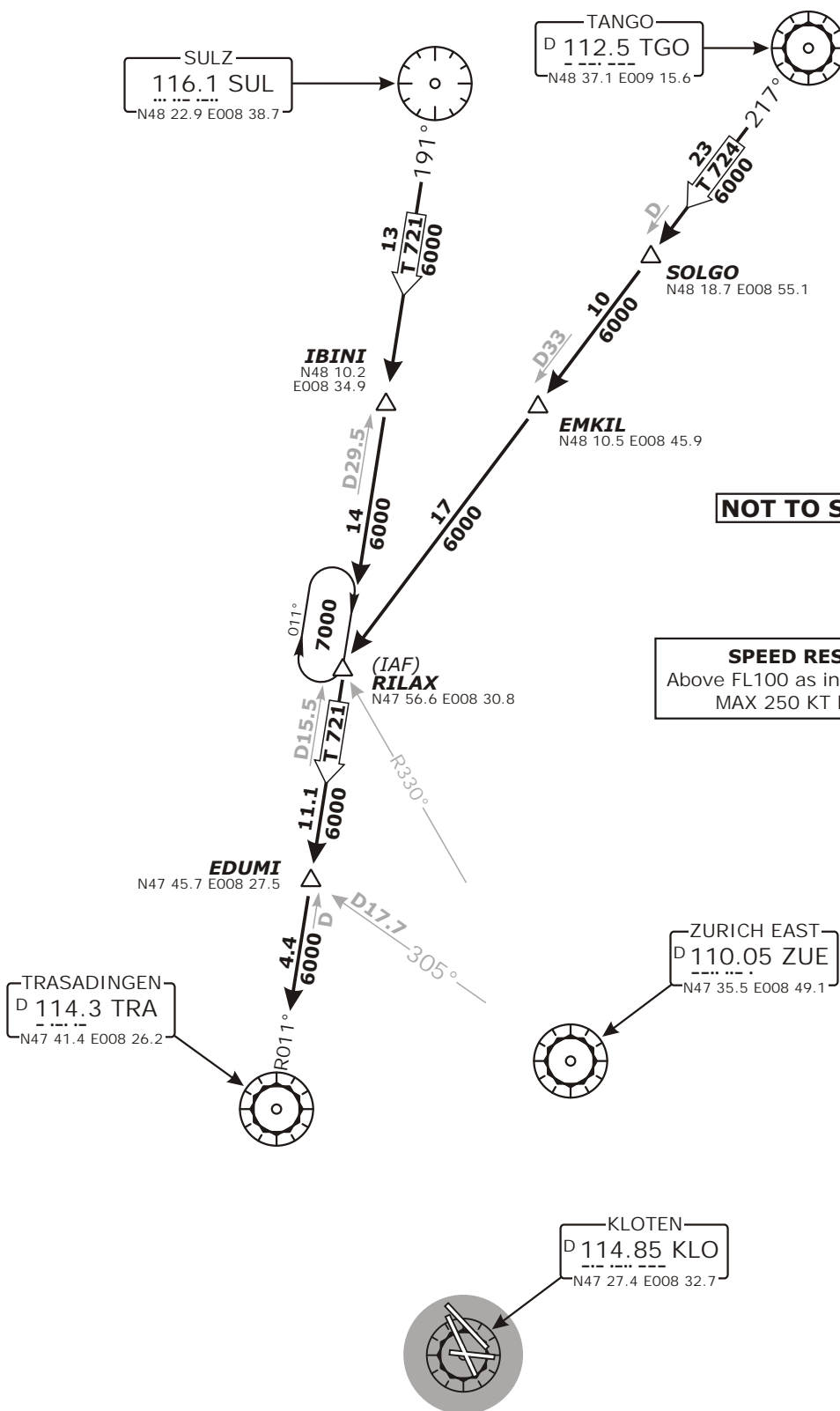
| | | | | |
|-----------------------------------|--------------------------------------|--------------------------------------|--------------------------|---|
| Swiss Radar LSAS_CTR 128.05 | ZURICH Arrival LSZH_APP 120.75 | ZURICH Final LSZH_F_APP 125.35 | Apt Elev 1416' | Alt Set: hPa (IN on request) Trans level: by ATC Trans alt: 7000' |
|-----------------------------------|--------------------------------------|--------------------------------------|--------------------------|---|



NON-RNAV TRANSITIONS

TO TRA

FOR CONTINUATION AFTER TRA REFER TO CHART NO.3



NOT TO SCALE

SPEED RESTRICTION
Above FL100 as instructed by Radar.
MAX 250 KT below FL100.

Valid for flight simulation use only - do not use for real life navigation

CHANGES: editorial.

http://www.vacc-sag.org/

© Jürg Gaensli <swiss-charts@gmx.ch>

http://www.swissflr.org/

LSZH/ZRH ZURICH

STAR CHART NO. 3
Revision 13 FEB 08

ZURICH, SWITZERLAND
RNAV and NON-RNAV STAR

Swiss Radar
LSAS_CTR
128.05

ZURICH Arrival
LSZH_APP
120.75

ZURICH Final
LSZH_F_APP
125.35

Apt Elev
1416'

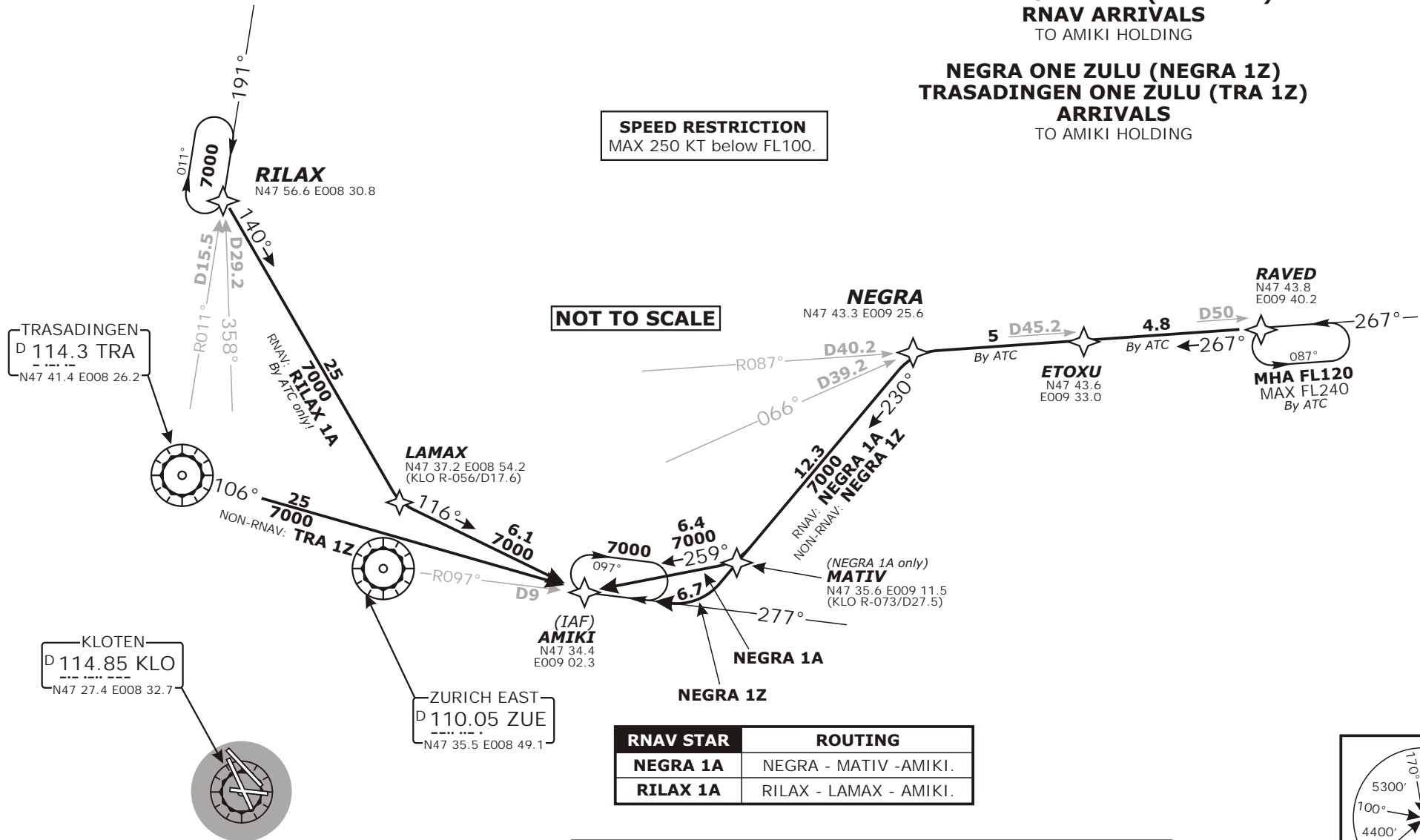
Alt Set: hPa (IN on request)
Trans level: by ATC
Trans alt: 7000'

**NEGRA ONE ALFA (NEGRA 1A)
RILAX ONE ALFA (RILAX 1A)
RNAV ARRIVALS
TO AMIKI HOLDING**

**NEGRA ONE ZULU (NEGRA 1Z)
TRASADINGEN ONE ZULU (TRA 1Z)
ARRIVALS
TO AMIKI HOLDING**

SPEED RESTRICTION
MAX 250 KT below FL100.

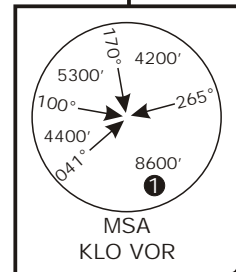
NOT TO SCALE



| RNAV STAR | ROUTING |
|-----------------|------------------------|
| NEGRA 1A | NEGRA - MATIV - AMIKI. |
| RILAX 1A | RILAX - LAMAX - AMIKI. |

| NON-RNAV STAR | ROUTING |
|-----------------|---|
| NEGRA 1Z | 230° track, intercept ZUE R-097 inbound to AMIKI. |
| TRA 1Z | TRA R-106 to AMIKI. |

① 5900' within 17 DME



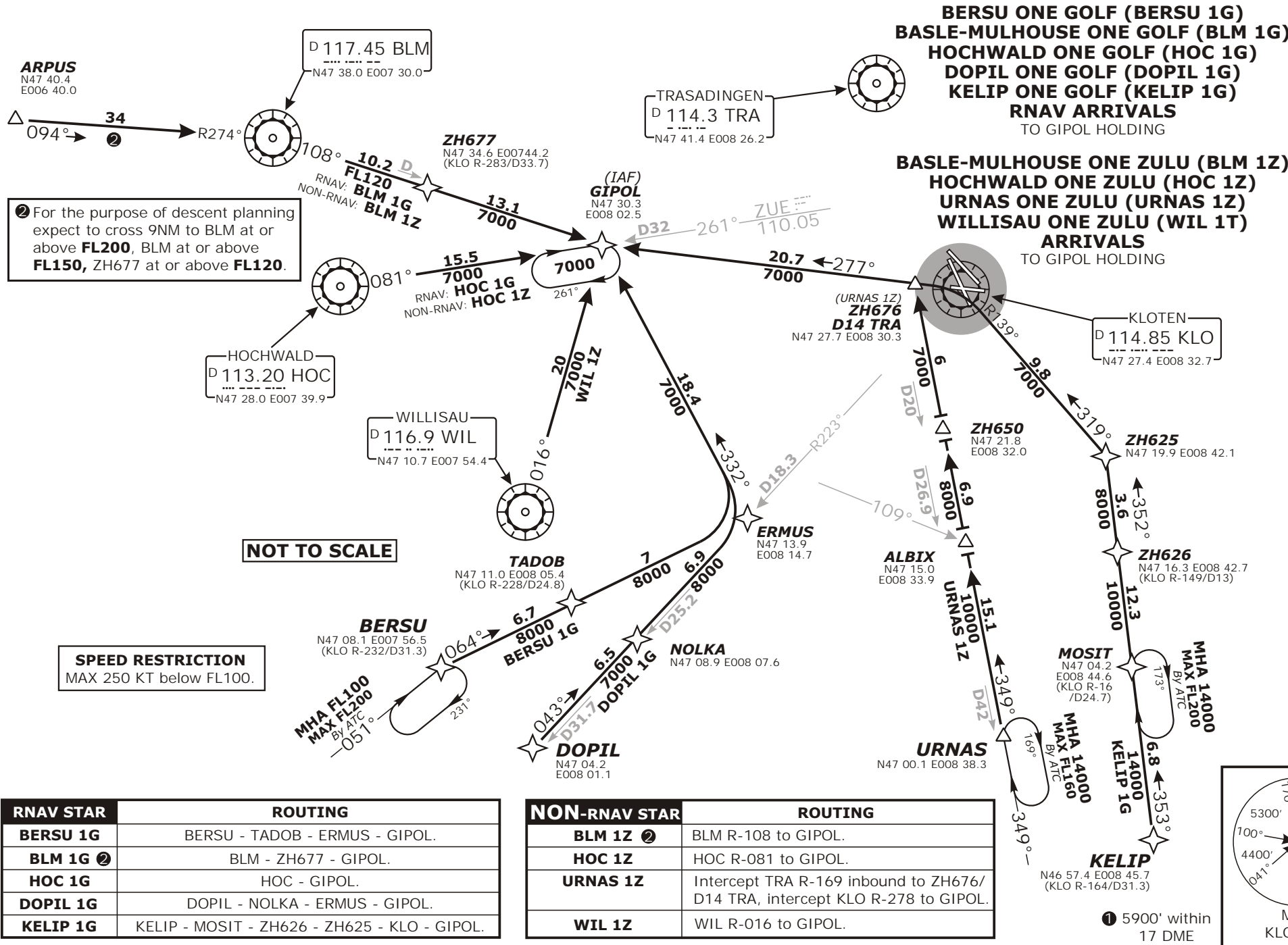
Valid for flight simulation use only - do not use for real life navigation

CHANGES: Editorial.

http://www.vacc-sag.org/

© Jung Gaensli <swiss-charts@gmx.ch>

http://www.swissair.org/



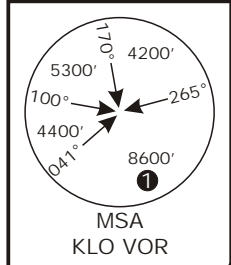
② For the purpose of descent planning expect to cross 9NM to BLM at or above **FL200**, BLM at or above **FL150**, ZH677 at or above **FL120**.

NOT TO SCALE

SPEED RESTRICTION
MAX 250 KT below FL100.

| RNAV STAR | ROUTING |
|-----------------|--|
| BERSU 1G | BERSU - TADOB - ERMUS - GIPOL. |
| BLM 1G ② | BLM - ZH677 - GIPOL. |
| HOC 1G | HOC - GIPOL. |
| DOPIL 1G | DOPIL - NOLKA - ERMUS - GIPOL. |
| KELIP 1G | KELIP - MOSIT - ZH626 - ZH625 - KLO - GIPOL. |

| NON-RNAV STAR | ROUTING |
|-----------------|---|
| BLM 1Z ② | BLM R-108 to GIPOL. |
| HOC 1Z | HOC R-081 to GIPOL. |
| URNAS 1Z | Intercept TRA R-169 inbound to ZH676/D14 TRA, intercept KLO R-278 to GIPOL. |
| WIL 1Z | WIL R-016 to GIPOL. |



LSZH/ZRH ZURICH
STAR CHART NO. 4
Revision 13 FEB 08
ZURICH, SWITZERLAND
RNAV and NON-RNAV STAR

| | | | | |
|-----------------------------------|--------------------------------------|--------------------------------------|--------------------------|---|
| Swiss Radar LSAS CTR 128.05 | ZURICH Arrival LSZH APP 120.75 | ZURICH Final LSZH F APP 125.35 | Apt Elev 1416' | Alt Set: hPa (IN on request) Trans level: by ATC Trans alt: 7000' |
|-----------------------------------|--------------------------------------|--------------------------------------|--------------------------|---|

**BERSU ONE GOLF (BERSU 1G)
BASLE-MULHOUSE ONE GOLF (BLM 1G)
HOCHWALD ONE GOLF (HOC 1G)
DOPIL ONE GOLF (DOPIL 1G)
KELIP ONE GOLF (KELIP 1G)
RNAV ARRIVALS
TO GIPOL HOLDING**

**BASLE-MULHOUSE ONE ZULU (BLM 1Z)
HOCHWALD ONE ZULU (HOC 1Z)
URNAS ONE ZULU (URNAS 1Z)
WILLISAU ONE ZULU (WIL 1Z)
ARRIVALS
TO GIPOL HOLDING**

① 5900' within 17 DME