

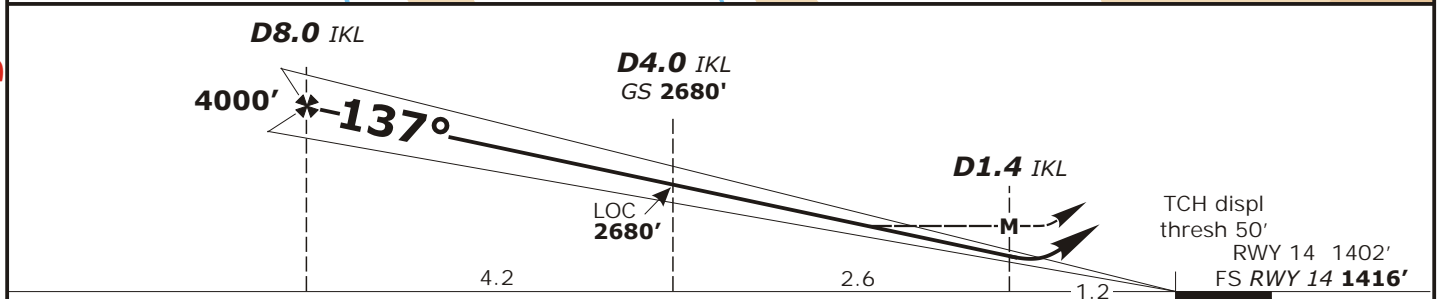
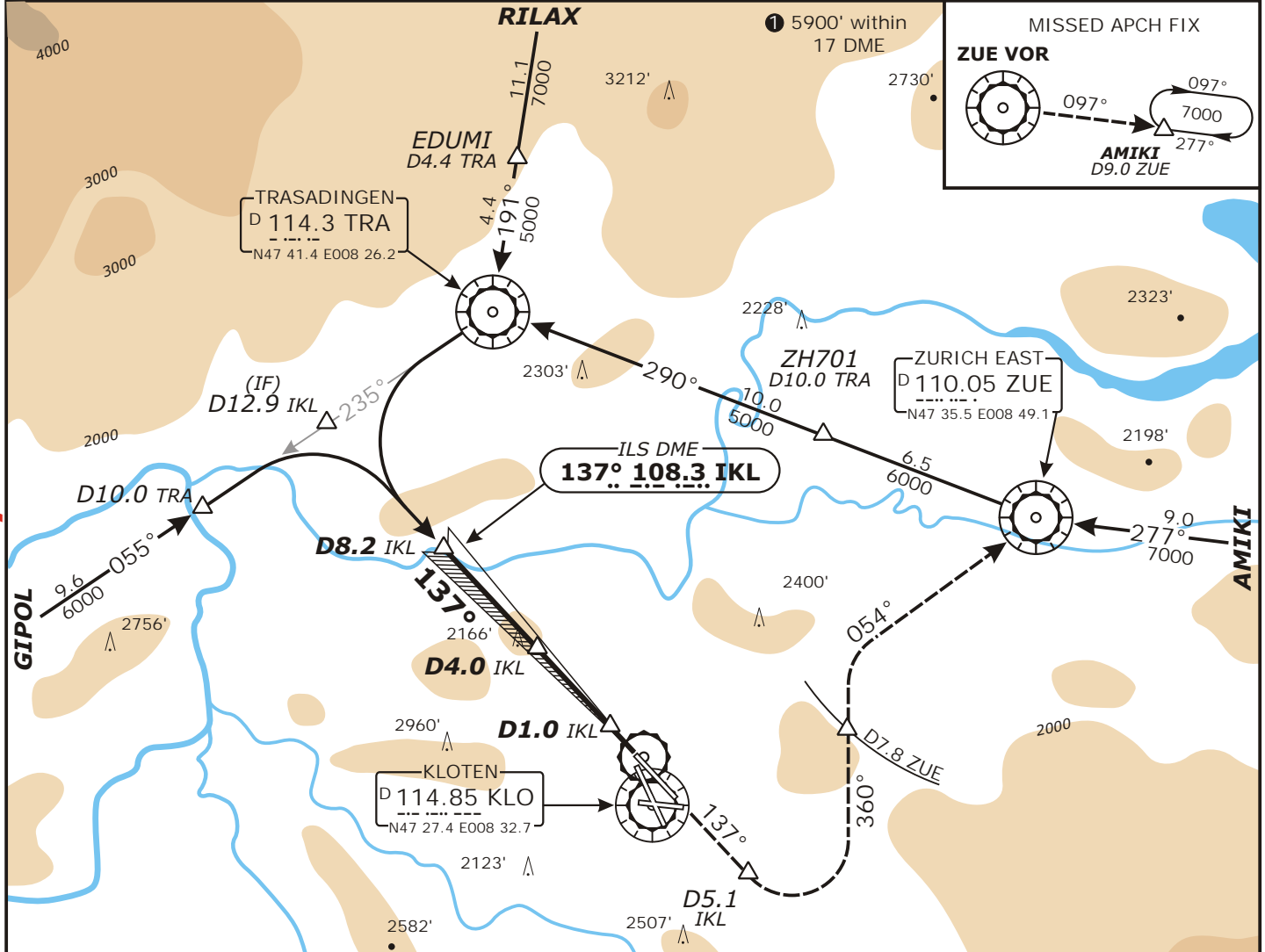
LSZH/ZRH ZURICH

APP CHART NO.1
Revision 05 JUN 08

ZURICH, SWITZERLAND ILS DME Rwy 14 CAT II/III

Valid for flight simulation use only - do not use for real life navigation

Swiss Radar LSAS_CTR 128.05	ZURICH Arrival LSZH_APP 120.75	ZURICH Final LSZH_F_APP 125.35	ZURICH Tower LSZH_TWR 118.10	ZURICH Ground LSZH_S_GND 121.75
LOC IKL 108.3	Final Apch Crs 137°	GS D4.0 IKL 2730' (1314')	CAT I : RA 187' DH 1616' (200') CAT II: RA 87' DH 1516' (100')	Apt Elev 1416' FS: RWY 1416 RWY 1402'
MISSED APCH: Climb on track 137°. Initial climb to 4000' . At D5.1 IKL passed the station, turn LEFT (MAX IAS 210 KT) onto track 360° to intercept R-234 ZUE. At D7.8 ZUE continue climb to 7000' . Cross ZUE VOR at 6000' or above and intercept R-097 ZUE to AMIKI.				
Alt Set: hPa	Rwy Elev: 51 hPa	Trans level: By ATC	Trans alt: 7000'	



Flight Simulator-OPS				STRAIGHT-IN LANDING RWY 14		CIRCLE-TO-LAND TO RWYS 10 & 28		Gnd speed-Kts					
								70 90 100 120 140 160					
MINIMUMS				A B C D				ILS GS 3.00° or LOC Descent Gradient 5.2%					
ILS CAT I				RA 195'		Max Kts		377 485 539 647 755 862					
				DH(A) 1616' (200')		Prohibited Southwest of apt btn extended centerlines rwy 16 & 28		MAP at D1.0 IKL (LOC out)					
				RVR 550m		MDA(H) _____ VIS _____		LOC (GS out) with IKL DME: MDA(H) 1870' (454') RVR 1700m.					
ILS CAT II				RA 95'		CAT A 110		It is pilot's responsibility to accept "swing over" procedure to rwy 16, when proposed by ATC.					
				DH(A) 1516' (100')		CAT B 135		RWY 14 is approved for CAT II/III operations, special aircrew and ACFT certification required.					
				RVR 300m		CAT C 180							
						CAT D 180							

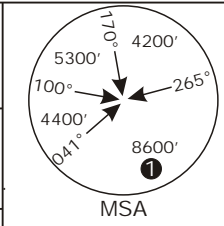
CHANGES: missed apch, proc

LSZH/ZRH ZURICH

APP CHART NO. 2
Revision 05 JUN 08

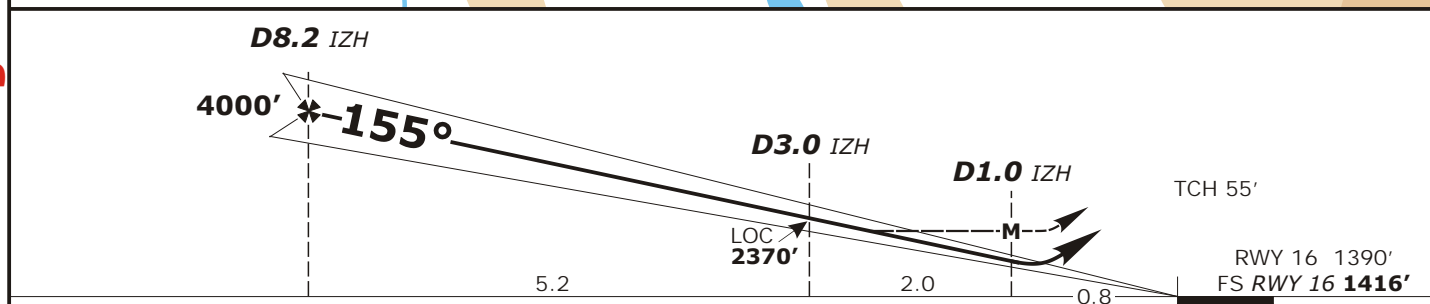
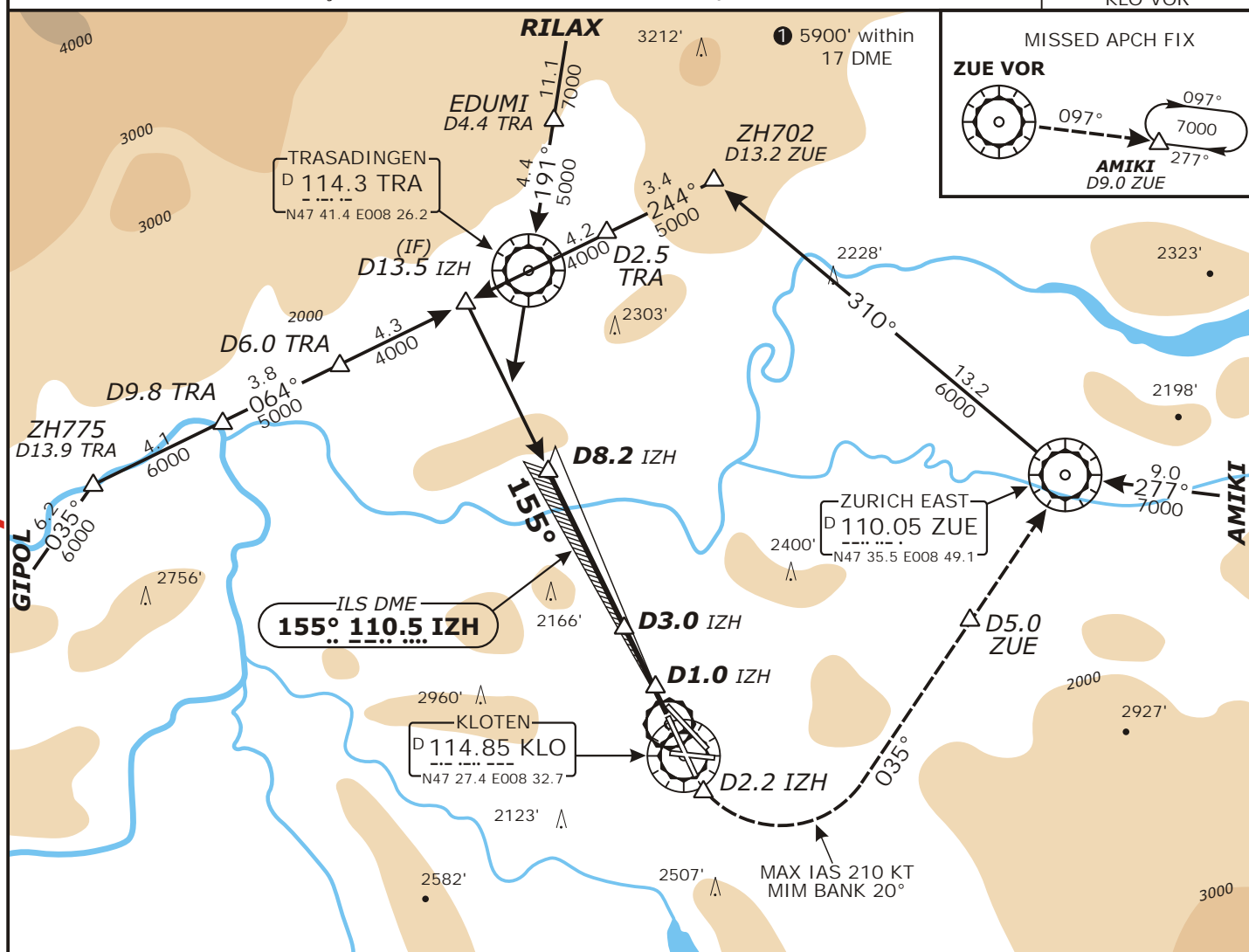
ZURICH, SWITZERLAND ILS DME Rwy 16 CAT II/III

Swiss Radar LSAS_CTR 128.05	ZURICH Arrival LSZH_APP 120.75	ZURICH Final LSZH_F_APP 125.35	ZURICH Tower LSZH_TWR 118.10	ZURICH Ground LSZH_S_GND 121.75
-----------------------------------	--------------------------------------	--------------------------------------	------------------------------------	---------------------------------------

LOC IZH 110.5	Final Apch Crs 155°	GS D4.0 IZH 2719' (1303')	CAT I : RA 187' DH 1616' (200') CAT II: RA 93' DH 1516' (100')	Apt Elev 1416' FS: RWY 1416 RWY 1390'	
----------------------------	----------------------------------	---	---	---	---

MISSED APCH: Climb on track 155°. Initial climb to **5000'**. At D2.2 IZH passed the station, but not below 1900', turn LEFT (MAX IAS 210 KT/MIM BANK 20°) to intercept R-215 inbound to ZUE. At D5.0 ZUE continue climb to **7000'**. Cross ZUE VOR at 6000' or above and intercept R-097 ZUE to AMIKI.

Alt Set: hPa Rwy Elev: 51 hPa Trans level: By ATC Trans alt: 7000'



Flight Simulator-OPS					STRAIGHT-IN LANDING RWY 16		CIRCLE-TO-LAND TO RWYS 10 & 28		Gnd speed-Kts							
					MINIMUMS		A B C D		A B C D		70 90 100 120 140 160					
					ILS CAT I		RA 187'		CAT A 110		ILS GS 3.00° or LOC Descent Gradient 5.2%					
							DH(A) 1616' (200')		Prohibited Southwest of apt btn extended centerlines rwy 16 & 28		377 485 539 647 755 862					
							RVR 550m		MDA(H) _____ VIS _____		MAP at D1.0 IZH (LOC out)					
					ILS CAT II		RA 93'		CAT B 135		LOC (GS out) with IZH DME: MDA(H) 1906' (490')					
							DH(A) 1516' (100')		CAT C 180		It is pilot's responsibility to accept "swing over" procedure to rwy 16, when proposed by ATC.					
							RVR 300m		CAT D 180		RWY 16 is approved for CAT II/III operations, special aircrew and ACFT certification required.					

Valid for flight simulation use only - do not use for real life navigation

CHANGES: Proc, missed apch.

LSZH/ZRH ZURICH

APP CHART NO.3
Revision 08 JAN 07

ZURICH, SWITZERLAND UNCATEGORIZED ILS DME Rwy 28

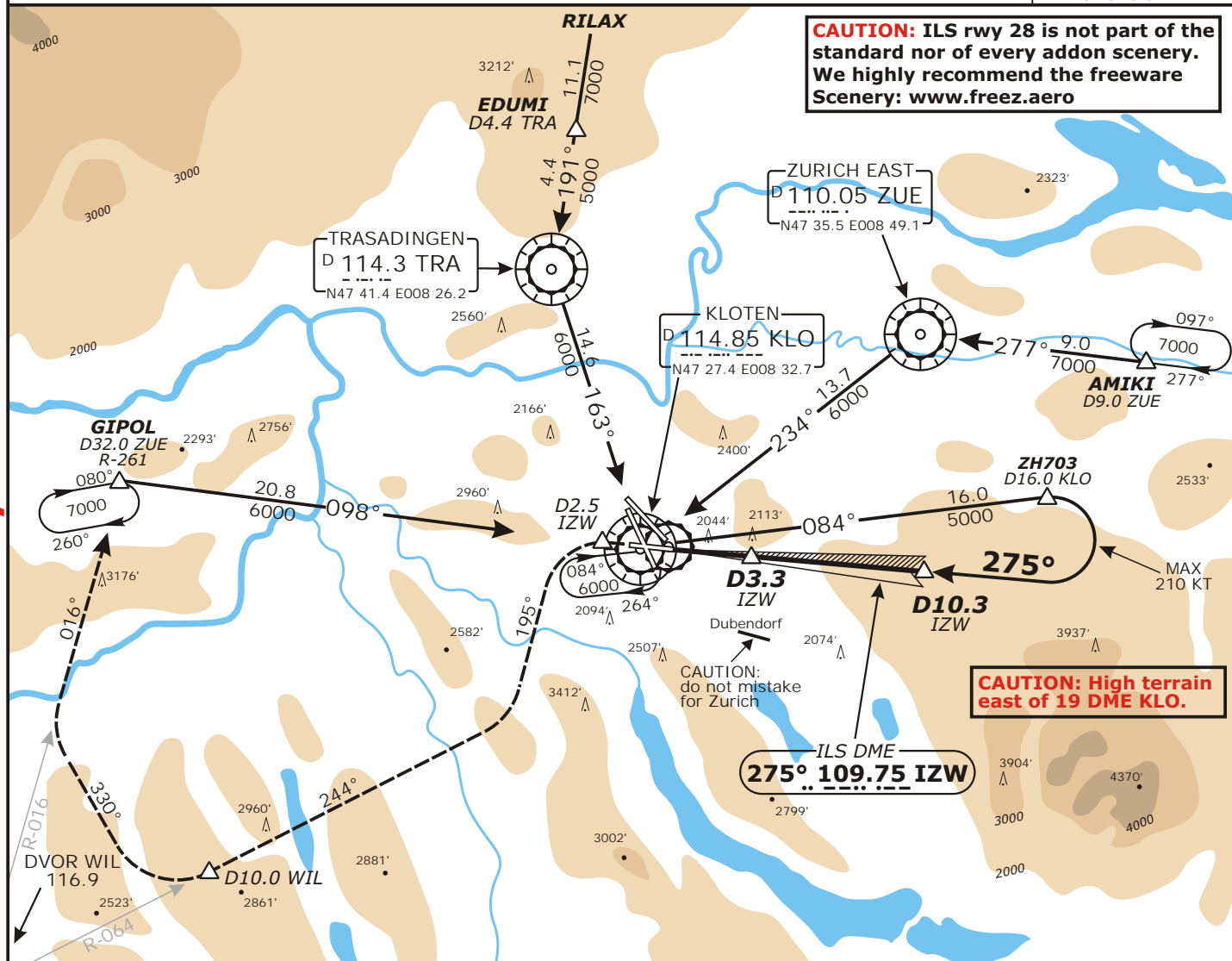
Swiss Radar LSAS_CTR 128.05	ZURICH Arrival LSZH_APP 120.75	ZURICH Final LSZH_F_APP 125.35	ZURICH Tower LSZH_TWR 118.10	ZURICH Apron LSZH_S_GND 121.75	ZURICH Apron LSZH_N_GND 121.85
LOC IZW 109.75	Final Apch Crs 275°	GS D3.3 IZW 2550' (1134')	ILS DH(H) Refer to Minimums	Apt Elev 1416' RWY 1416'	

MISSED APCH: Climb straight ahead. **Initial climb to 4000'**. At D2.5 IZW passed the station, turn **LEFT** (MAX IAS 210 KT) onto track 195°, **then continue climb to 7000'**. Intercept R-064 WIL inbound. At D10.0 WIL turn **RIGHT** onto 330°, intercept R-016 WIL. Proceed to GIPOL.

Alt Set: hPa Rwy Elev: 51 hPa Trans level: By ATC Trans alt: 7000'

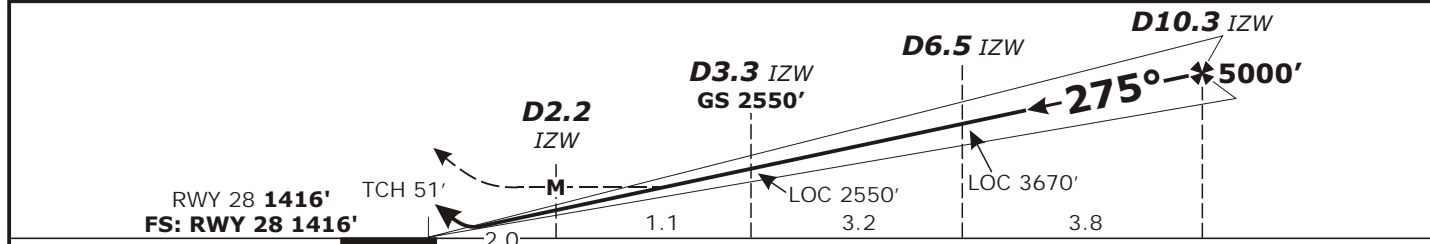
MSA 25 NM KLO
Inner circle 17 NM

CAUTION: ILS rwy 28 is not part of the standard nor of every add-on scenery. We highly recommend the freeware Scenery: www.frez.aero



CAUTION: High terrain east of 19 DME KLO.

LOC	IZW DME	3.0	4.0	5.0	6.0	7.0	8.0	9.0	10.0
(GS out)	ALTITUDE	2450'	2800'	3150'	3500'	3850'	4200'	4550'	4900'



Flight Simulator-OPS STRAIGHT-IN LANDING RWY 28		Gnd speed-Kts						
Missed apch climb gradient mim 2.5 % DA(H):	ILS	Missed apch climb gradient mim 4.0 % DA(H):	Descent Gradient 3.30° or					
			LOC Descent Gradient 5.7%					
CAT A: 2831' (1415')		CAT A: 2147' (731')	70	90	100	120	140	160
CAT B: 2842' (1426')		CAT B: 2157' (741')	417	532	591	710	828	946
CAT C: 2853' (1437')		CAT C: 2168' (752')	LOC (GS out) Missed apch climb gradient mim					
CAT D: 2863' (1447')		CAT D: 2178' (762')	4% MDA(H) 2360' (944')					
			2.5% MDA(H) 3070' (1654')					

A	Visibility 4000m	Visibility 4300m
B		
C		
D		

Valid for flight simulation use only - do not use for real life navigation

CHANGES: New Procedure

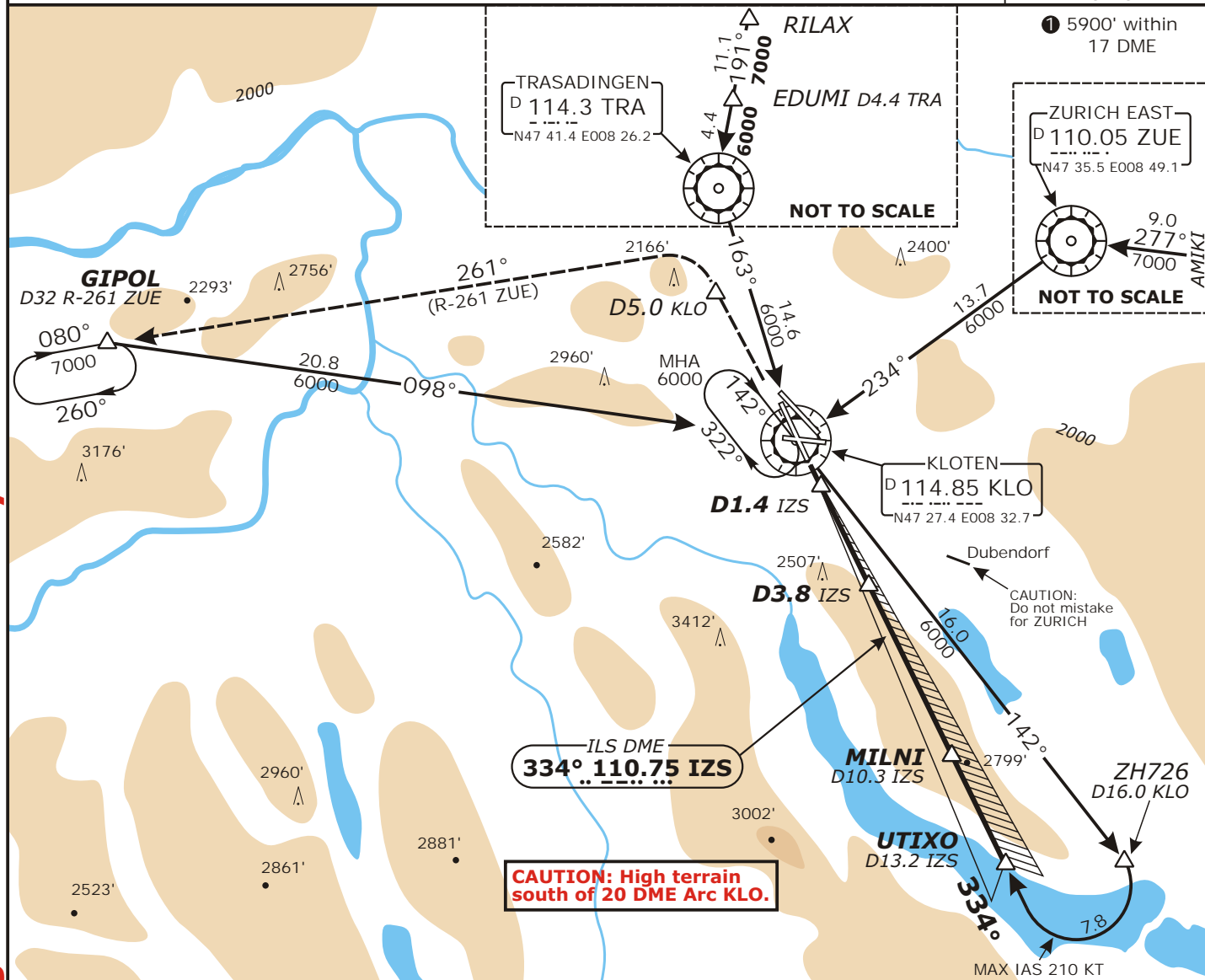
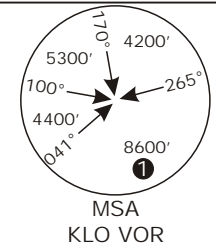
LSZH/ZRH ZURICH

APP CHART NO.4
Revision 08 JAN 07

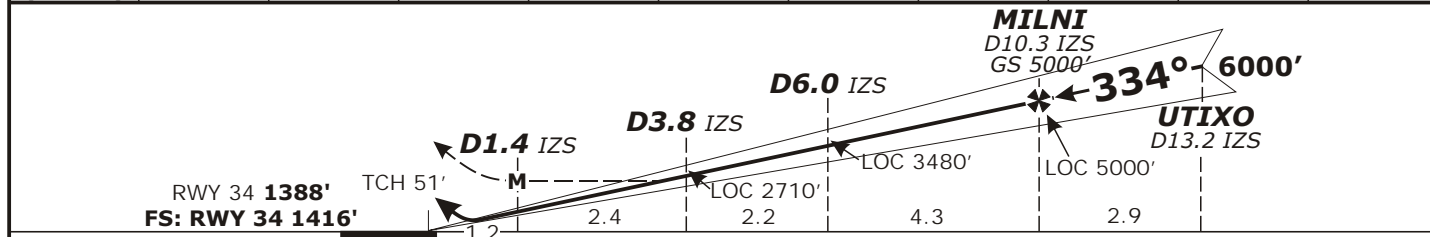
ZURICH, SWITZERLAND ILS DME Rwy 34

Valid for flight simulation use only - do not use for real life navigation

Swiss Radar LSAS_CTR 128.05	ZURICH Arrival LSZH_APP 120.75	ZURICH Final LSZH_APP 125.35	ZURICH Tower LSZH_TWR 118.10	ZURICH Ground LSZH_S_GND 121.75
LOC IZS 110.75	Final Apch Crs 334°	GS D3.8 2710' (1294')	ILS DA(H) Refer to Minimums	Apt Elev 1416' FS: RWY 1416 RWY 1388'
MISSED APCH: Climb straight ahead. Initial climb to 5000'. At D5.5 IZS passed the station turn LEFT. Continue climb to 7000'. Intercept R-261 ZUE. Proceed to GIPOL.				
Alt Set: hPa	Rwy Elev: 51 hPa	Trans level: By ATC	Trans alt: 7000'	



LOC	IZS DME	2.0	3.0	4.0	5.0	7.0	8.0	9.0	11.0	13.0
(GS out)	ALTITUDE	2080'	2430'	2780'	3130'	3880'	4180'	4530'	5230'	5930'



Flight Simulator-OPS Missed apch climb gradient mim 3.0% to 2400' DA(H) 1616' (200')	STRAIGHT-IN LANDING RWY 34 ILS Missed apch climb gradient mim 2.5% DA(H): CAT A: 1820' (204') CAT B: 1630' (214') CAT C: 1643' (204') CAT D: 1653' (237')	Gnd speed-Kts 70 90 100 120 140 160 Descent Gradient 3.30° or LOC Descent Gradient 5.7% 436 561 623 748 872 997
	RVR 550m	RVR 600m

CHANGES: Communications

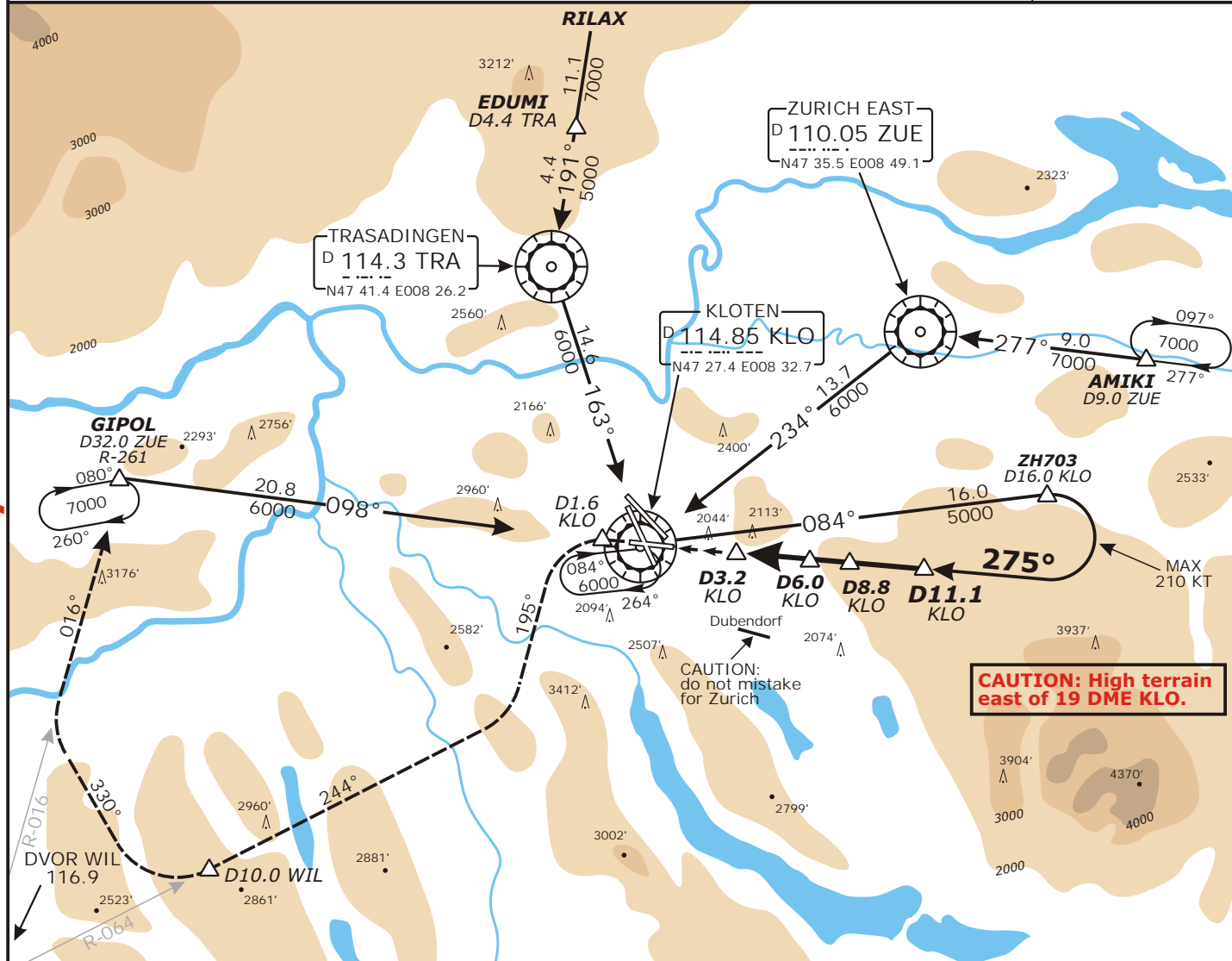
LSZH/ZRH ZURICH

APP CHART NO.5
Revision 20 FEB 07

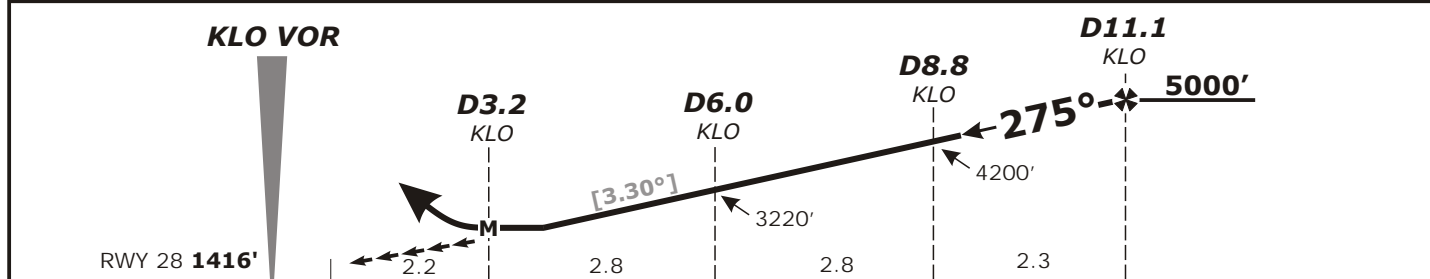
ZURICH, SWITZERLAND VOR DME Rwy 28

Valid for flight simulation use only - do not use for real life navigation

Swiss Radar LSAS_CTR 128.05	ZURICH Arrival LSZH_APP 120.75	ZURICH Final LSZH_F_APP 125.35	ZURICH Tower LSZH_TWR 118.10	ZURICH Apron LSZH_S_GND 121.75	ZURICH Apron LSZH_N_GND 121.85	
<p>MISSED APPROACH: Climb on R-095° KLO to 4000'. At D1.6 KLO past the station, turn LEFT (MAX IAS 210 KT) onto track 195°, then continue climb to 7000'. Intercept R-064 WIL inbound. At D10.0 WIL turn RIGHT onto 330°, intercept R-016 WIL. Proceed to GIPOL.</p>						
<p>Alt Set: hPa Rwy Elev: 51 hPa Trans level: By ATC Trans alt: 7000' Expect turbulences on short final during south-westerly winds. DME reads D1.0 KLO at threshold</p>						MSA 25 NM KLO Inner circle 17 NM



KLO	4.0	5.0	6.0	7.0	8.0	9.0	10.0	11.0
ALTITUDE	2520'	2870'	3220'	3570'	3920'	4270'	4620'	4970'



Flight Simulator-OPS STRAIGHT-IN LANDING RWY 28 MDA(H) 2360' (944')	Gnd speed-Kts	70	90	100	120	140	160
	Descent Gradient 5.77% or Descent angle [3.30°]	409	526	584	701	818	935
MAP at D3.2 KLO							
A							
B							
C							
D	4300m						

CHANGES: New Procedure

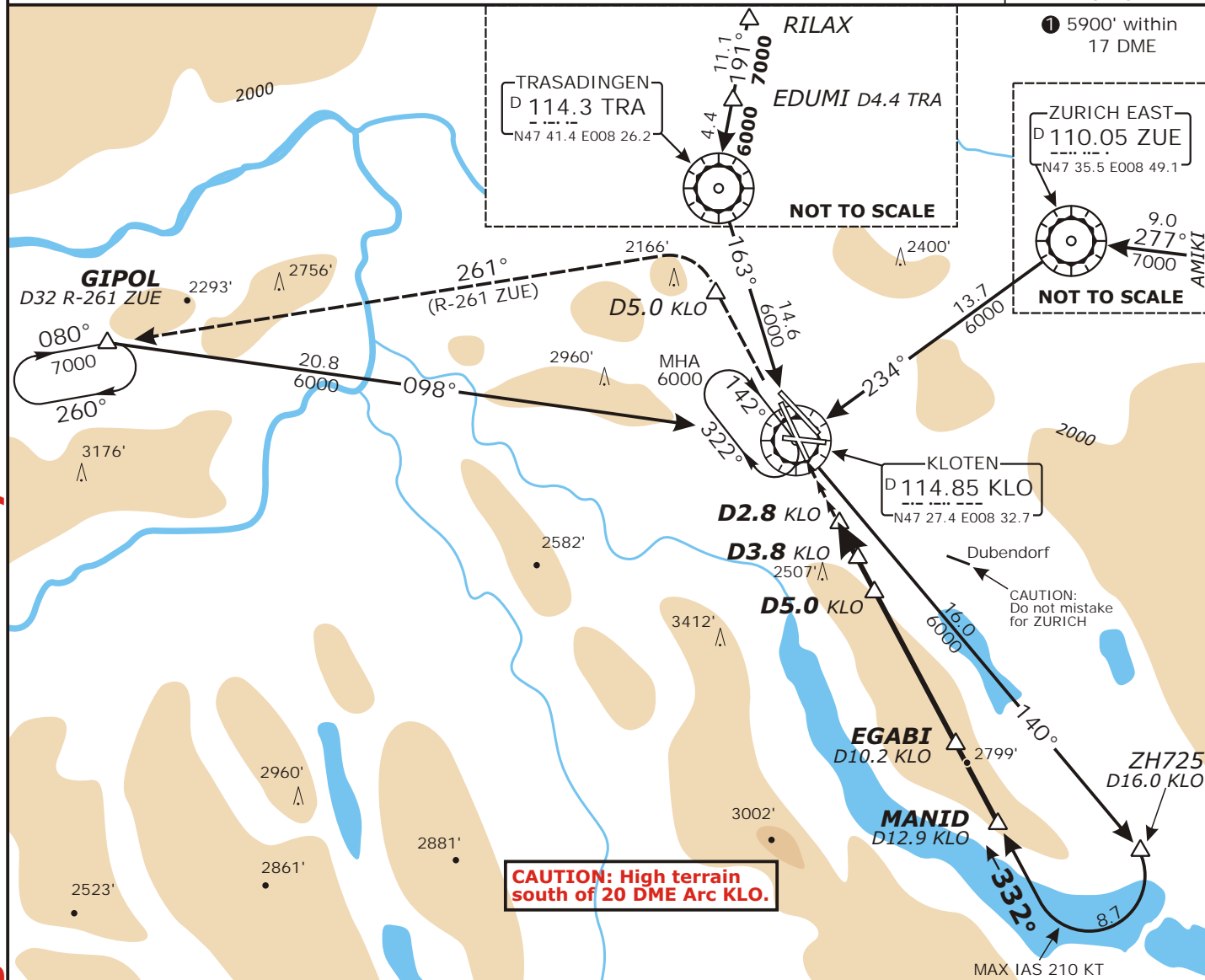
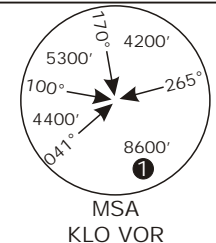
LSZH/ZRH ZURICH

APP CHART NO.6
Revision 08 JAN 07

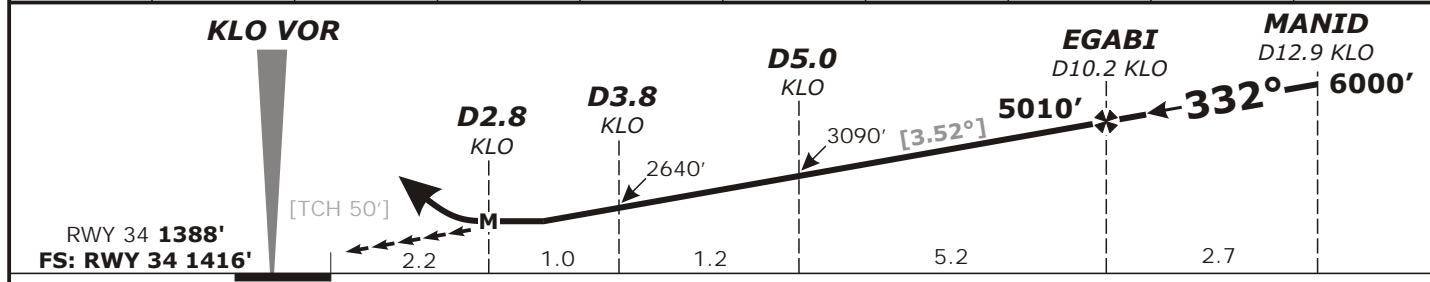
ZURICH, SWITZERLAND (GPS) VOR DME Rwy 34

Valid for flight simulation use only - do not use for real life navigation

Swiss Radar LSAS_CTR 128.05	ZURICH Arrival LSZH_APP 120.75	ZURICH Final LSZH_F_APP 125.35	ZURICH Tower LSZH_TWR 118.10	ZURICH Ground LSZH_GND 121.90
VOR KLO 114.85	Final Apch Crs 332°	Minimum Alt EGABI 5010' (3584')	MDA(H) 2430' (1014')	Apt Elev 1416' FS: RWY 1416 RWY 1388'
MISSED APCH: Climb on R-152 inbound KLO VOR. Initial climb to 5000'. Continue on R-332 KLO. At D5.0 passed the station turn LEFT. Continue climb to 7000'. Intercept R-261 ZUE. Proceed to GIPOL.				
Alt Set: hPa		Rwy Elev: 51 hPa	Trans level: By ATC	
				Trans alt: 7000'



KLO DME	4.0	5.0	6.0	7.0	8.0	9.0	10.0	11.0	12.0
ALTITUDE	2720'	3090'	3460'	3830'	4190'	4560'	4930'	5300'	5670'



Flight Simulator-OPS STRAIGHT-IN LANDING RWY 34 MDA(H) 2430' (1014') 4500m	Gnd speed-Kts	70	90	100	120	140	160
	Descent Gradient 6.15% or Descent angle [3.52°]	436	561	623	748	872	997
	MAP at D2.8 KLO						

CHANGES: Communications.