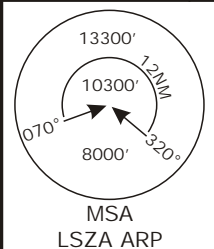


Valid for flight simulation use only - do not use for real life navigation

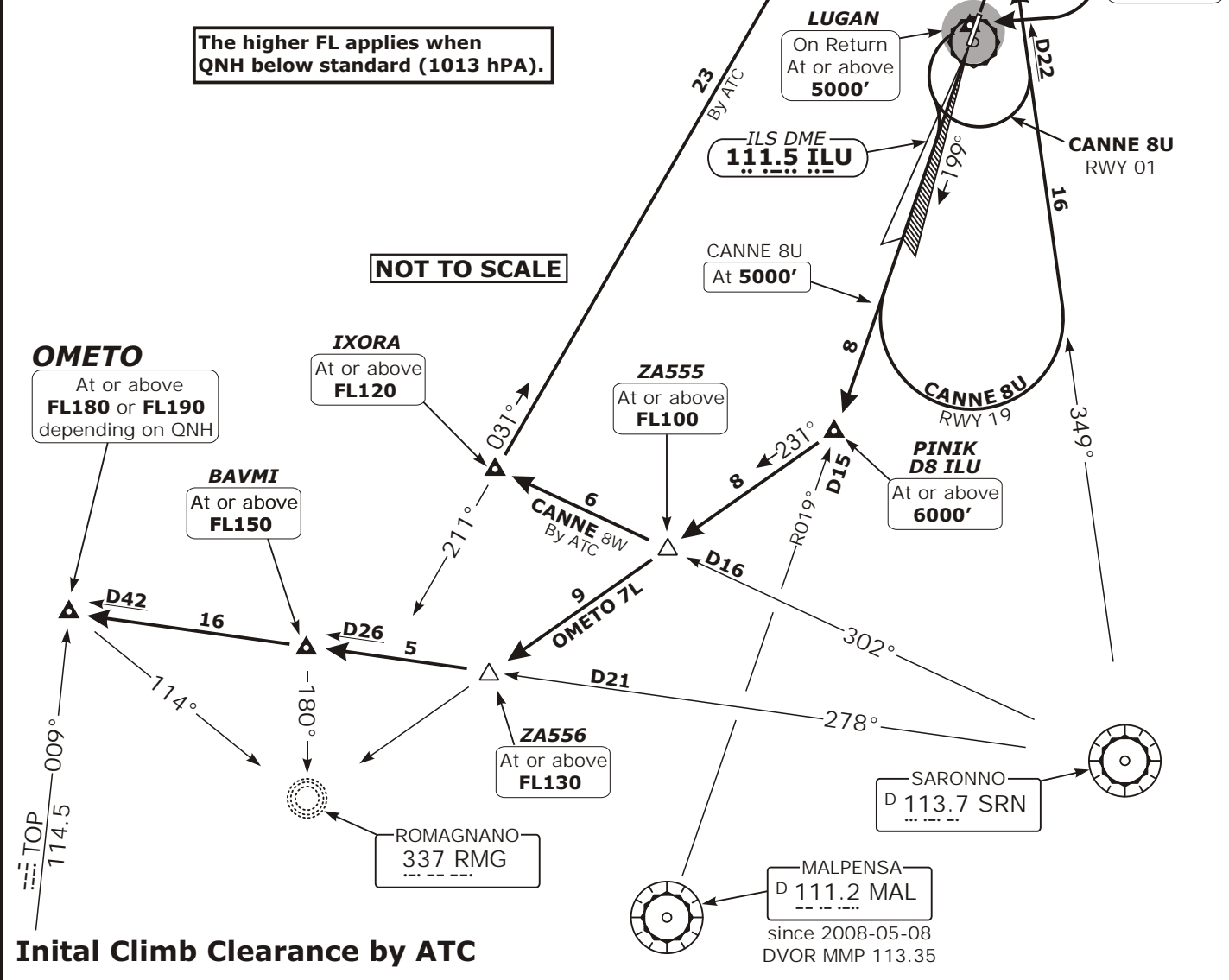
Swiss Radar LSAS_CTR 128.05	Milano Centre LIMM_CTR 127.45	Milano Approach LIMM_W_APP 126.75	Apt Elev 915'	Trans level: By ATC Trans alt: 6000'
-----------------------------------	-------------------------------------	---	-------------------------	--------------------------------------



**CANNE 8U, CANNE 8W
OMETO 8W
DEPATRURES**
(RWYS 01, 19)

The higher FL applies when QNH below standard (1013 hPa).

NOT TO SCALE



RWY	TAKE-OFF	ALTITUDE
01	Climb straight ahead. Use Loc 01 back-beam for guidance. At ILU 2 DME, turn RIGHT (MAX IAS 150 KT, MNM bank 25°) to LUGANO.	Cross ILU 2 DME at or above 2800' , LUGANO at or above 5000' .
19	Climb straight ahead. Use Localizer 01 for track guidance until receiving MAL/MMP VOR. Follow R019 MMP/MAL.	

SID	ROUTING	ALTITUDE
OMETO 8W	Proceed to PINIK, 231° inbound RMG Lctr via ZA555 to ZA556, intercept SRN R-278 via BAVMI Int to OMETO.	Cross PINIK at or above 6000' , ZA555 at or above FL100 , ZA556 at or above FL130 , BAVMI at or above FL150 , OMETO at or above FL180/FL190 .
CANNE 8U	At 5000' turn LEFT, intercept SRN R-349° to CANNE.	Cross ZA505 at or above FL90 , ZA506 at or above FL130 , CANNE at or above FL140/FL150 .
CANNE 8W By ATC	Proceed to PINIK, 231° bearing inbound RMG Lctr to ZA555, intercept SRN R-302 to IXORA, 031° bearing from RMG Lctr to CANNE.	Cross PINIK at or above 6000' , ZA555 at or above FL100 , IXORA at or above FL120 , CANNE at or above FL140/FL150 .

CHANGES: STAR, MSA revised.

